

► SAL - Single Inlet Centrifugal Fan

SAL fans has high flow rate impeller and a robust body that can change blow direction.



MOTOR INSULATION CLASS	F CLASS
MOTOR PROTECTION CLASS	IP 55
MOTOR EFFICIENCY CLASS	IE3
MOTOR ENCLOSURE TYPE	TEFC
MOTOR BRAND	GAMAK-VOLT-WAT
BODY MATERIAL	GALVANIZED SHEET METAL
BODY COATING	POWDER COATING
IMPELLER MATERIAL	ALUMINIUM
DUTY CYCLE	IEC Duty Cycle-S1
WORKING TEMPERATURE	-20 - +50 °C
STANDARDS	IEC-60335-2-80, ISO 1940-1

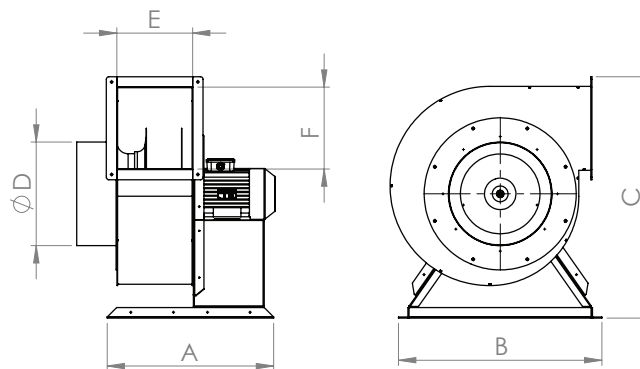


MODEL	VOLTAGE (V)	FREQUENCY (Hz)	POWER (kW)	REVOLUTION (rpm)	FLOW RATE (m³/h)	NOISE LEVEL (dB(A))
SAL 280	380	50	0,18	1.450	1.100	73
SAL 315	380	50	0,25	1.469	1.600	73
SAL 355	380	50	0,37	1.471	2.300	75
SAL 400	380	50	0,55	1.478	3.300	78
SAL 450	380	50	0,75	1.454	5.000	70
SAL 500	380	50	1,10	1.462	7.000	83
SAL 560	380	50	1,50	1.464	9.800	74
SAL 630	380	50	3,00	1.465	14.000	89
SAL 710	380	50	4,00	950	13.000	89

Values are for 0 Pa.

Single-phase motors are available up to 1,5 kW

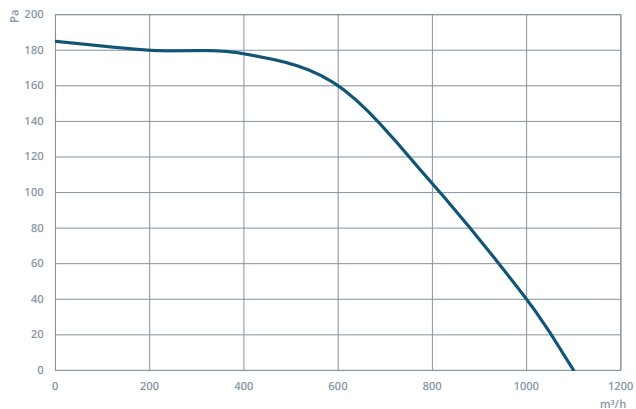
DRAWING



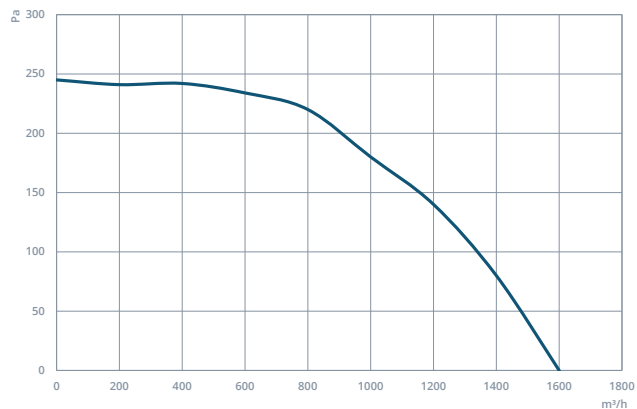
MODEL	A (mm)	B (mm)	C (mm)	D (mm)	E (mm)	F (mm)
SAL 280	500	500	700	250	180	225
SAL 315	500	500	700	250	180	225
SAL 355	585	600	800	250	225	350
SAL 400	570	670	840	280	245	290
SAL 450	635	780	920	400	285	310
SAL 500	635	800	940	400	285	320
SAL 560	665	830	950	400	285	320
SAL 630	710	880	1025	450	300	370
SAL 710	710	880	1150	450	300	370

PERFORMANCE CURVES

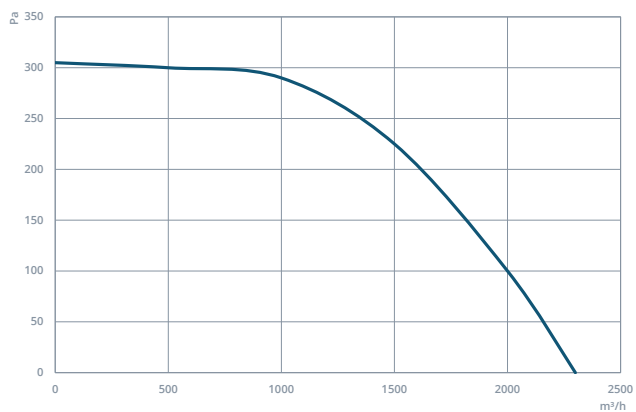
SAL 280



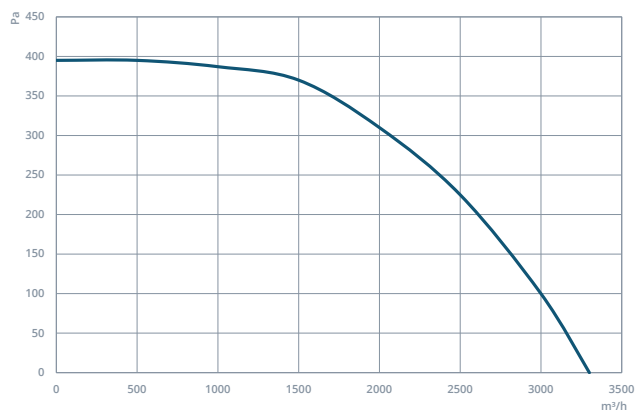
SAL 315



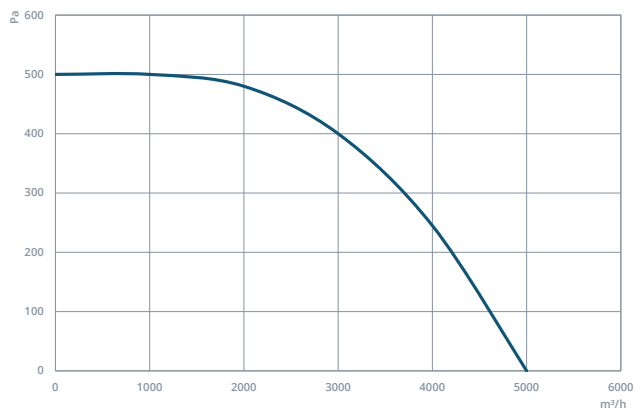
SAL 355



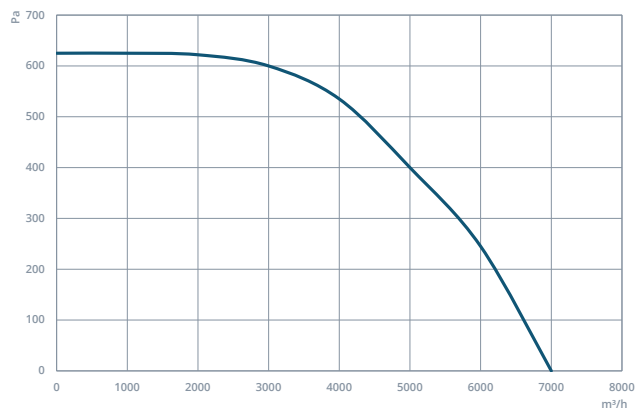
SAL 400



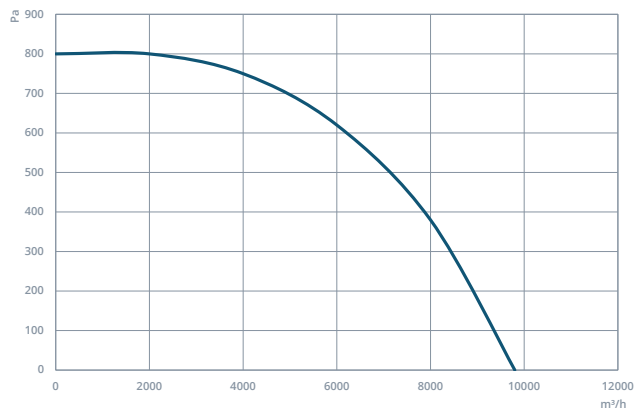
SAL 450



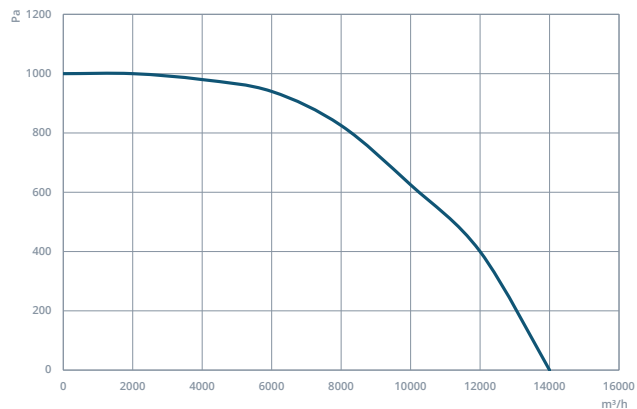
SAL 500



SAL 560



SAL 630



PERFORMANCE CURVES

SAL 710

