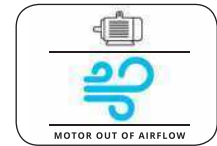


KEF-H Cabinet Kitchen Exhaust Fan



Description :

KEF-H fans can be connected to kitchen hoods to exhaust the air from cookers, grilles, fryers etc. It will exhaust the greasy air and keeps the kitchen area clean and odorless. Inspection hatch allows cleaning the fan and maintenance. Motor is located out of the airstream and is not effected by matters in the air.

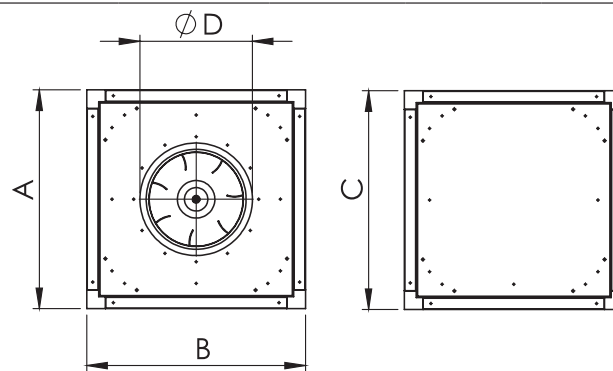
MOTOR PROTECTION CLASS	IP 55
MOTOR INSULATION CLASS	F CLASS
MOTOR EFFICIENCY CLASS	IE2-IE3
MOTOR BRAND	GAMAK-VOLT-WAT
MOTOR ENCLOSURE TYPE	TEFC
BODY MATERIAL	GALVANIZED SHEET METAL
BODY COATING	ELECTROSTATIC POWDER COATING
IMPELLER TYPE	BACKWARD CURVED
IMPELLER MATERIAL	ALIMINIUM SHEET METAL
DUTY CYCLE	IEC Duty Cycle-S1
WORKING AMBIENT TEMP	-20 - +50 °C
DIRECTIVE	IEC-60335-2-80, ISO 1940-1



TECHNICAL SPECIFICATIONS AND DRAWING

MODEL	VOLTAGE (V)	FREQUENCY (Hz)	POWER (KW)	REV. (RPM)	FLOW RATE (m3/h)	SOUND PRESSURE dB(A) 3m	WEIGHT (KG)
KEF-H 280	380	50	0,18	1.450	1.100	53	27
KEF-H 315	380	50	0,25	1.469	1.600	53	33
KEF-H 355	380	50	0,37	1.471	2.300	55	42
KEF-H 400	380	50	0,55	1.478	3.300	58	65
KEF-H 450	380	50	0,75	1.454	5.000	50	69
KEF-H 500	380	50	1,1	1.462	7.000	63	75
KEF-H 560	380	50	1,5	1.464	9.800	54	85
KEF-H 630	380	50	3	1.465	14.000	69	95

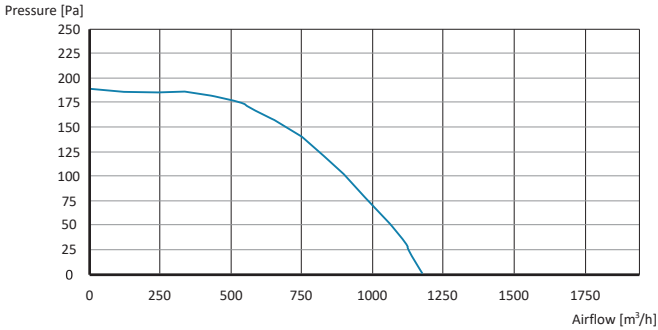
Values are for 0 Pa



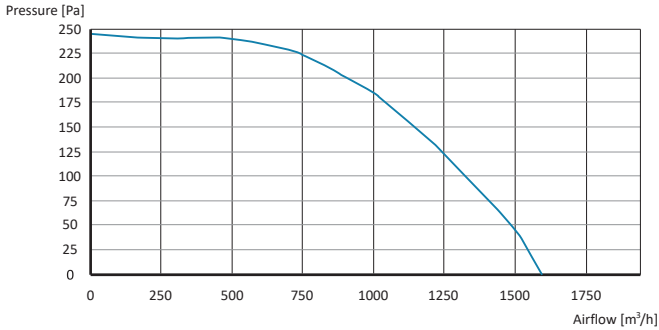
MODEL	A (mm)	B (mm)	C (mm)	D (mm)
KEF-H 280	450	450	450	280
KEF-H 315	500	500	500	315
KEF-H 355	500	500	500	355
KEF-H 400	600	600	600	400
KEF-H 450	700	700	700	450
KEF-H 500	800	800	800	500
KEF-H 560	900	900	900	560
KEF-H 630	1.000	1.000	1.000	630

KEF-H Performance Curves

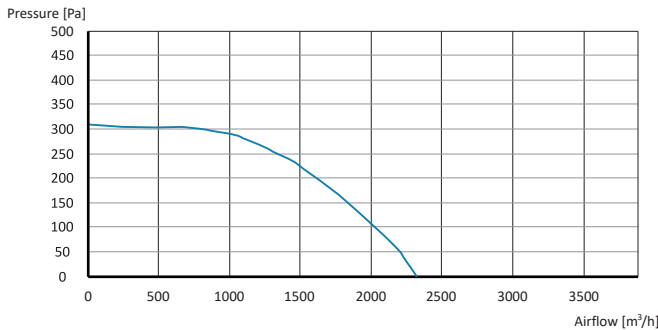
KEF-H 280



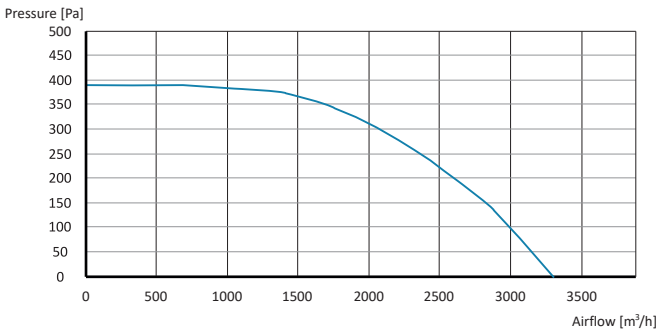
KEF-H 315



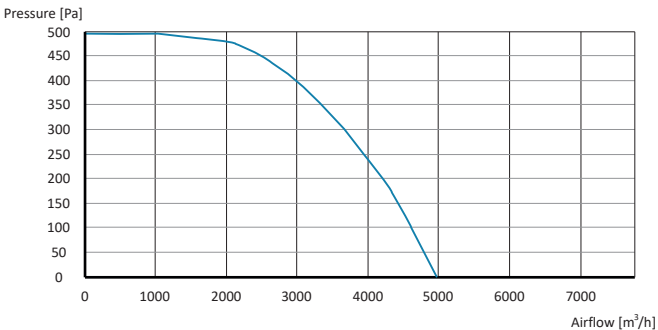
KEF-H 355



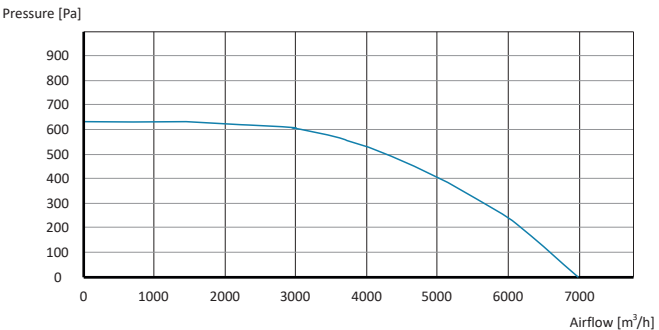
KEF-H 400



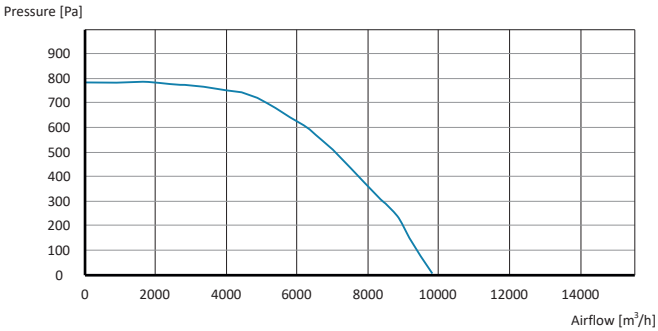
KEF-H 450



KEF-H 500



KEF-H 560



KEF-H 630

