



EN

# Centrifugal Blowers Single inlet



## Centrifugal Blowers in A.C.

### Alternating Current

For ordering the correct Centrifugal Blower, the following code has to be used:

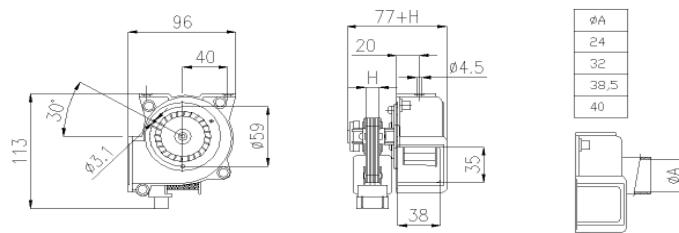
C	A					-						-			V o l t	H z	
1	1	2	3	3	4	-	5	5	6	6	6	-	7	7	-	8	9

- 1 - CA = centrifugal alternating current
- 2 - Wheel and housing material code:  
" P " for all Nylon: " A " for all Aluminium: " E " for Nylon wheel and Aluminium housing.
- 3 - Wheel diameter code (see table, column 1)
- 4 - " B " for sleeve bearings : " C " for ball bearings.
- 5 - Supply connection: " FA " by Faston : " PA " with cable.
- 6 - Coil code (see table, column 2)
- 7 - Supply connector w/r to air outlet:  
" R7 " for same side of air outlet ; " R8 " for opposite side.
- 8 - Rated voltage.
- 9 - Rated frequency.

CENTRIFUGAL A.C. TYPE	COIL FA = faston or PA = With cable	Stack Height = h	WHEEL			HOUSING			SPEED AND FREE AIR FLOWRATE		MAX PRESSURE Pa	INPUT POWER W	Max Temperature °C
			Material	Diameter	Length	Material	Air intake diameter	Air outlet size	rpm	m <sup>3</sup> /h			
			Code	mm	mm	mm	mm	mm	mm	mm			
<b>CAP 05</b>	109	12	GLASS FIBER NYLON	55	30	NYLON	50	34x38	2350	34	41	16	50°
<b>CAP 07</b>	001	12		70	46		59	36x55	2100	57	60	21	60°
	003	16		70	46	ALUMINIUM	56	33x54	2180	56	78	21	60°
<b>CAE 07</b>	001	12	ALUMINIUM	76	40		56	33x54	2500	65	85	26	60°
	003	16							1620	55	100	21	60°
<b>CAA 07</b>	001	12	ALUMINIUM	76	40		56	33x54	2150	73	105	28	60°
	003	16				2180			190	260	82	50°	
<b>VC10AA</b>	P173	50	GLASS FIBER NYLON	100	54	ALUMINIUM	82	60x72	2180	190	260	82	50°
<b>VC10NA</b>	P173	50		100	54		82	60x72	2320	190	250	82	50°
<b>VC10NN</b>	P173	50	100	54	NYLON	82	60x72	2320	190	250	82	50°	
<b>VC12</b>	External Rotor	15	ALUM.	120	62	ALUM.	93	81x65	1900	260	230	57	40°
									2170	300	300	85	40°
<b>VC14</b>	External Rotor	15	ALUM.	140	59	*	120	90x103	1750	420	350	120	40°
		35							2250	550	382	200	40°

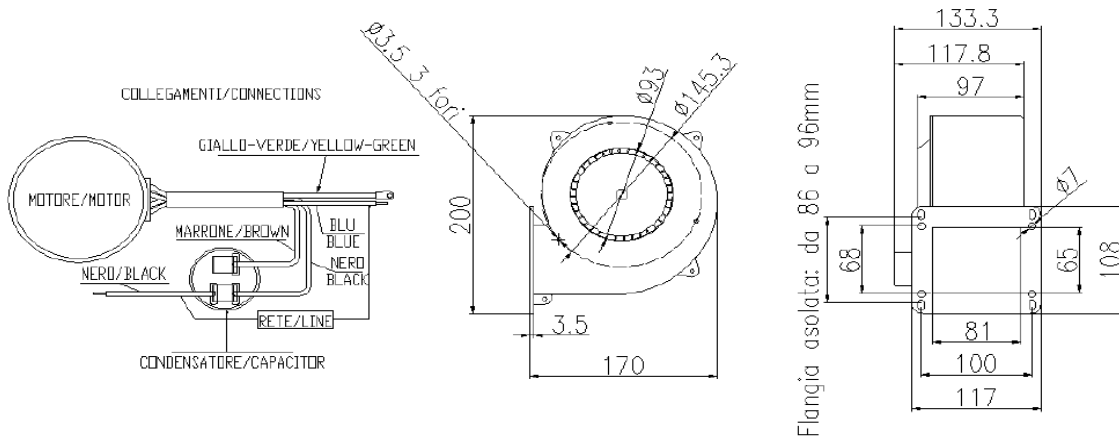
\* = Steel sheet treated by cataphoresis

### CAP 05





### VC 12



### VC 14

